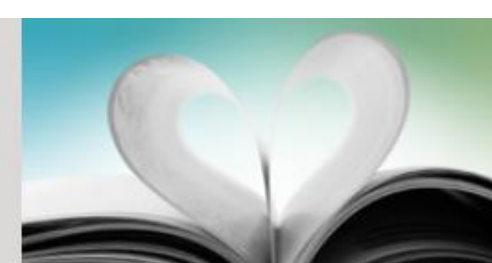


UPM Sol silk



Technical Specification

Weight	g/m ²	60*	70	80	90*
Thickness	µm	54	63	72	81
Bulk	ISO 534 cm ² /g	0.9	0.9	0.9	0.9
Brightness	ISO 2470-2 %	90	93	94	94
Smoothness	ISO 8791-4	1.5	1.5	1.5	1.5
Opacity	ISO 2471%	91	95	97	98

* These weights are stocked at the mill

Stock Range

g/m ²	630 x 880	640 x 900	720 x 1020
70	✓	✓	✓
80	✓	✓	✓

Print Processes

Litho
✓

Finishing Suitability

Laminate	Spot UV	Varnish	Foil Block	Folding	Die Cut	Emboss	Scoring
✓	✓	✓	✓	✓	✓	✓	✓

Sustainability

Pulp			Environmental			Quality, Health & Safety		
PEFC™	ECF	ORIGIN	EMAS	EU Ecolabel	ISO 14001	ISO 9001	ISO 50001	OHSAS 18001
✓	✓	✓	✓	✓	✓	✓	✓	✓

PEFC™ Programme for the Endorsement of Forestry Certification.™ Forest management certification scheme

ECF Elemental Chlorine Free

ORIGIN Identification of tree species used for pulp manufacture obtainable on request

EMAS Eco-Management and Audit Scheme

EU Ecolabel European environmental award for overall environmental performance

ISO 14001 International standard for environmental management

ISO 9001 International standard for quality management

ISO 50001 International standard for energy management

OHSAS 18001 International standard for health & safety management

Updated – 8th January 2020